

VARIANTE AL P.d.C. 3603/14 PER LA REALIZZAZIONE DI UN CENTRO DIURNO PER ANZIANI E DI UNA STRUTTURA PER LA CURA DELLA PERSONA, UBICATI IN VIA DEL COMMISSARIO A PADOVA

COMMITTENTE:

FINVIT S.r.l.
Via Pierobon n°46 - cap. 35010
Limena PD

COINTESTATARIO P.d.C.:

COOP. SOCIALE CITTA' SO.LA.RE.
Via del Commissario n°42 - cap. 35124
Padova

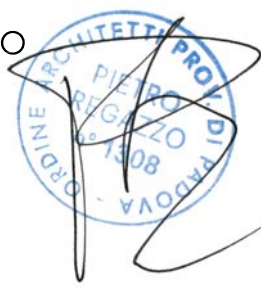
PROGETTAZIONE - COORDINAMENTO GENERALE

STUDIO

ARCHIPOLIS

ANTONIO VENTURATO - PIETRO REGAZZO
ARCHITETTI

Tel 049 8941025 - Fax 049 8078905
via Savelli, 9/D - 35129 Padova
e_mail progetti@studioarchipolis.it



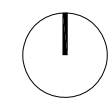
ELABORATO: SEZIONI AUTORIZZATE

SCALA: 1:200

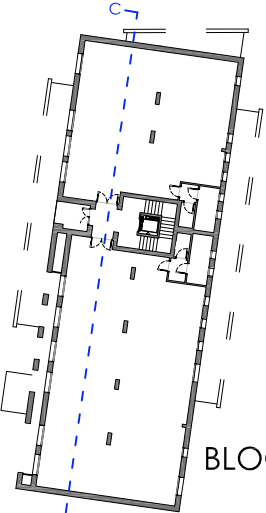
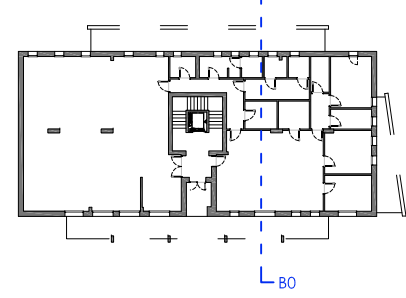
DATA: NOVEMBRE 2017

| COMMESSA | LIVELLO DI PROGETTAZIONE | NUMERO EDIFICIO | TIPO ELABORATO | N° TAVOLA | REVISIONE | N°PIANO |
|--------------------------------|--------------------------|-----------------|----------------|-----------|-----------|---------|
| social housing nucleo 2 Padova | | | ARC | 04 | 00 | |

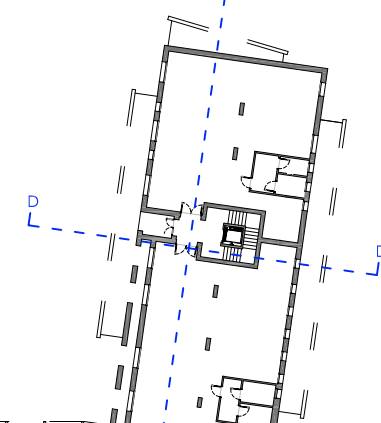
NORD



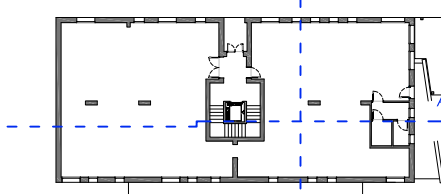
BLOCCO D



BLOCCO C

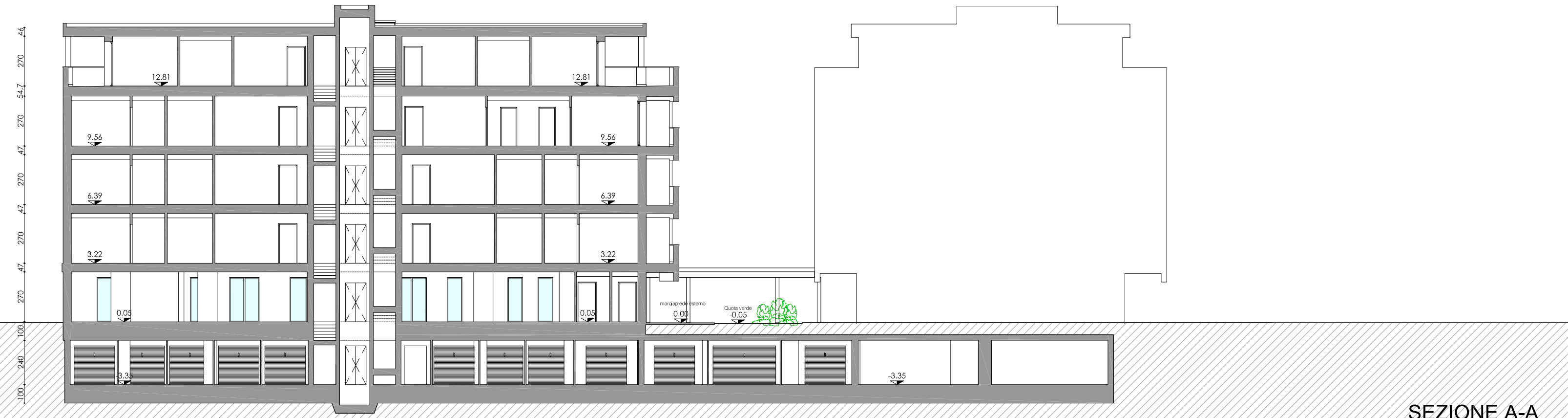


BLOCCO B

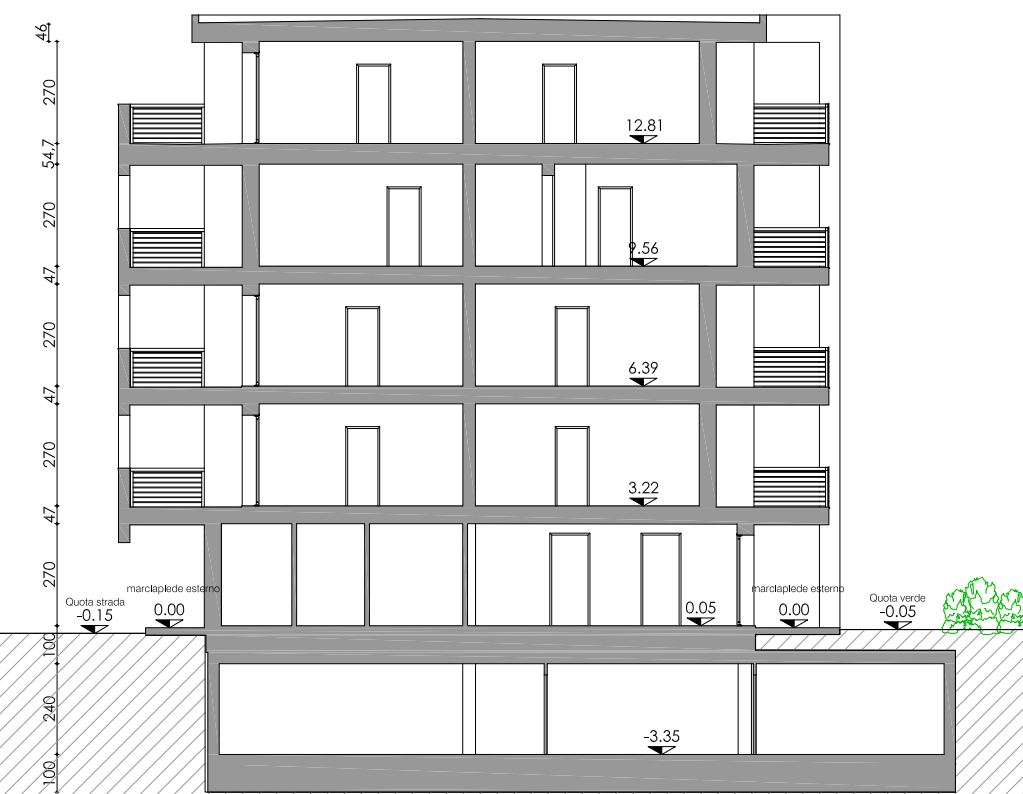


BLOCCO A

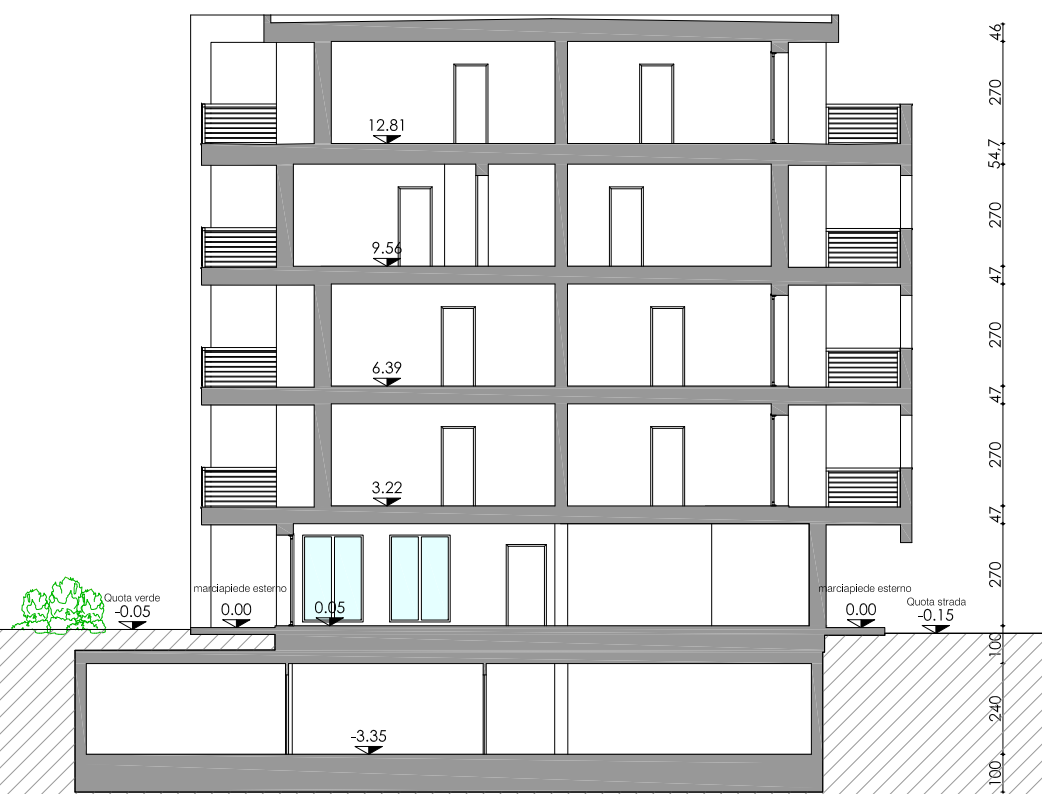
KEY MAP



SEZIONE A-A



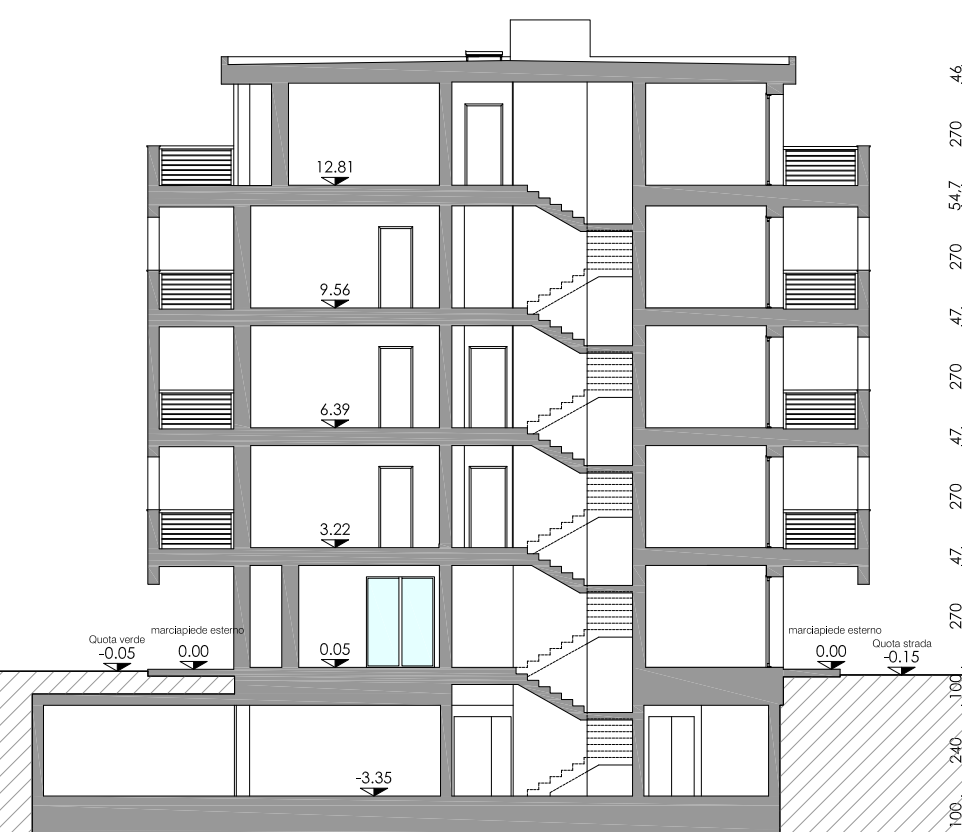
SEZIONE B0-B0



SEZIONE B-B



SEZIONE C-C



SEZIONE D-D